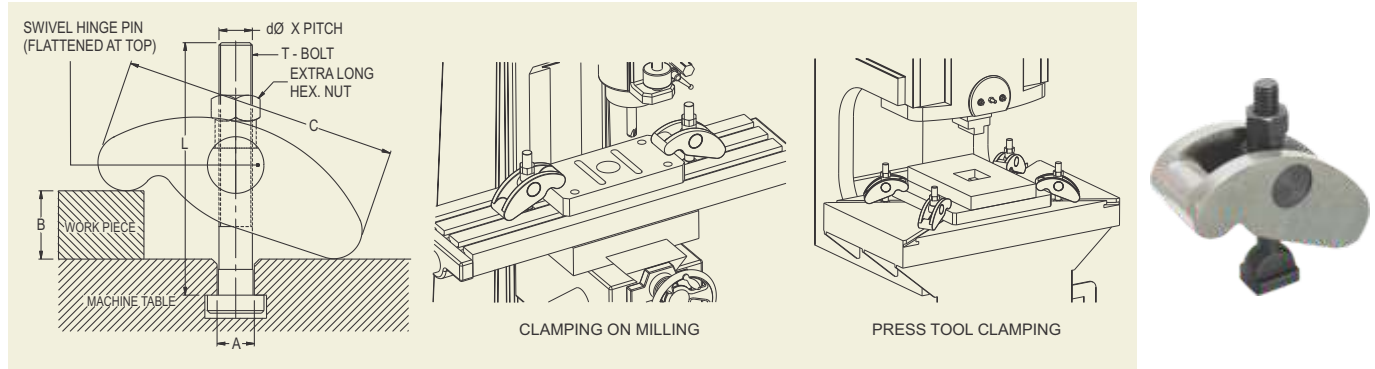


UNIVERSAL STRAP CLAMP

FOR POWER PRESSES, MILLING, DRILLING, SHAPING, BORING ETC.

'TOOLFAST' Universal Strap Clamp is most suitable for die clamping on power presses and a very useful clamp for job clamping on 'T' slot table of Drilling, Milling, Shaping, Boring and other machine tools. No supports are required at the rear of the clamp since the body of the clamp is self-positioning as the rear part rests on the table and front holds the job. The body positions itself with the help of swivel hinge pin according to the thickness of the workpiece, the T-Bolt remaining in vertical position and the nut is tightened on the flattened portion of swivel hinge pin. Clamp is supplied complete with hardened T-Bolt & special nut.



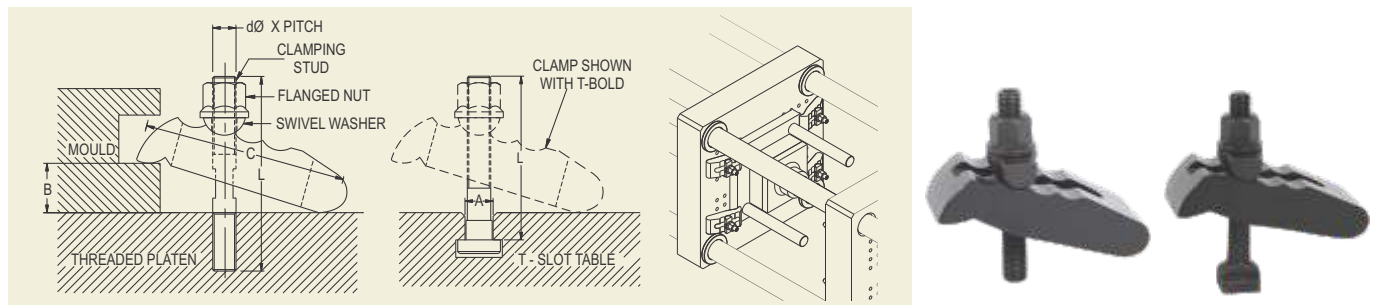
MODEL	T-SLOT SIZE A	dØ x PITCH x L	CLAMPING RANGE B	LENGTH OF CLAMP C	BREADTH OF CLAMP	TIGHTENING TORQUE Nm Max.*	CLAMPING FORCE Max.	N. W. Kgs.
USC-12A	12	M12 x 1.75 x 100	0-60	105	42	90	2000 Kgs.	0.84
USC-12B	14	M12 x 1.75 x 100	0-60	105	42	90	2000 Kgs.	0.86
USC-16A	16	M16 x 2.0 x 130	0-80	130	50	210	3200 Kgs.	1.73
USC-16B	18	M16 x 2.0 x 130	0-80	130	50	210	3200 Kgs.	1.74
USC-20A	20	M20 x 2.5 x 150	0-100	160	55	410	5000 Kgs.	2.45
USC-20B	22	M20 x 2.5 x 150	0-100	160	55	410	5000 Kgs.	2.48
USC-24A	24	M24 x 3.0 x 210	0-120	190	65	730	6000 Kgs.	4.39
USC-24B	28	M24 x 3.0 x 210	0-120	190	65	730	6000 Kgs.	4.68

MOULD CLAMP

FOR PLASTIC INJECTION MOULDING & PRESSURE DIE CASTING MACHINES

'TOOLFAST' Mould Clamp is designed specially for low height applications only such as clamping of moulds on plastic injection moulding machines & pressure die casting machines. The compact front portion of the clamp enables it to penetrate into the limited clamping area of the mould and clamp it. The positioning of forged swivel washer on required curved groove enables the operator to set the center distance between the clamping portion and the clamping bolt as per the nearest tapped hole available on platen (where there are no T-slots). No supports are required at the rear of the clamp as the rear portion rests on the platen and front holds the mould. Flanged nut is tightened on the swivel washer which takes care of the positioning of clamp body. These clamps are equally useful on pressure die casting machines, hydraulic presses & power presses where low height clamping is done.

Clamps are supplied complete with swivel washer, flanged nut & clamping stud or T-Bolt as shown in tables below.



MOULD CLAMP - WITH CLAMPING STUD

MODEL	dØ x PITCH x L	CLAMPING RANGE B	LENGTH OF CLAMP C	BREADTH OF CLAMP	TIGHTENING TORQUE Nm Max.*	CLAMPING FORCE Max.	N. W. Kgs.
MC-12	STUD M-12 x 1.75 x 100	0-35	110	50	90	2000 Kgs.	0.99
MC-16	STUD M-16 x 2.0 x 125	0-40	135	60	210	3200 Kgs.	1.67
MC-20	STUD M-20 x 2.5 x 175	0-50	160	70	410	5000 Kgs.	2.81
MC-24	STUD M-24 x 3.0 x 200	0-60	180	80	730	6000 Kgs.	4.19

MOULD CLAMP - WITH T-BOLT

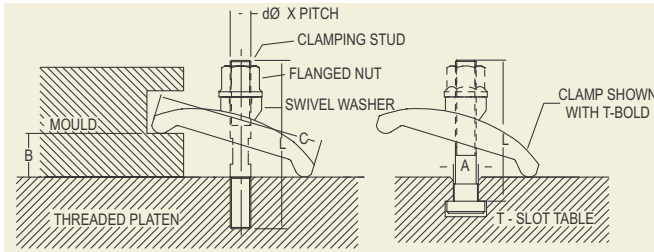
MODEL	dØ x PITCH x L	T-SLOT SIZE A	CLAMPING RANGE B	LENGTH OF CLAMP C	BREADTH OF CLAMP	TIGHTENING TORQUE Nm Max.*	CLAMPING FORCE Max.	N. W. Kgs.
MC-12A	T-BOLT M-12 x 1.75 x 100	12	0-35	110	50	90	2000 Kgs.	1.15
MC-12B	T-BOLT M-12 x 1.75 x 100	14	0-35	110	50	90	2000 Kgs.	1.30
MC-16A	T-BOLT M-16 x 2.0 x 130	16	0-40	135	60	210	3200 Kgs.	1.76
MC-16B	T-BOLT M-16 x 2.0 x 130	18	0-40	135	60	210	3200 Kgs.	1.78
MC-20A	T-BOLT M-20 x 2.5 x 150	20	0-50	160	70	410	5000 Kgs.	2.89
MC-20B	T-BOLT M-20 x 2.5 x 150	22	0-50	160	70	410	5000 Kgs.	2.92
MC-24A	T-BOLT M-24 x 3.0 x 210	24	0-60	180	80	730	6000 Kgs.	4.40
MC-24B	T-BOLT M-24 x 3.0 x 210	28	0-60	180	80	730	6000 Kgs.	4.72

* Exceeding the maximum torque damages the clamp parts and warranty expires.

MOULD CLAMP - FORGED

FOR PLASTIC INJECTION MOULDING & PRESSURE DIE CASTING MACHINES

The Popular 'TOOLFAST' mould clamp is now available in forged steel body for extra strength. All models shown below are similar to the MC models on the previous page.



MOULD CLAMP - FORGED - WITH CLAMPING STUD

MODEL	dØ	x	PITCH	x	L	CLAMPING RANGE B	LENGTH OF CLAMP C	BREADTH OF CLAMP	TIGHTENING TORQUE Nm Max.*	CLAMPING FORCE Max.	N. W. Kgs.
MCF-16	STUD	M-16	x	2.0	x 125	0-50	124	58	210	3200 Kgs.	0.98
MCF-20	STUD	M-20	x	2.5	x 175	0-65	156	68	410	5000 Kgs.	2.0

MOULD CLAMP - FORGED - WITH T- BOLT

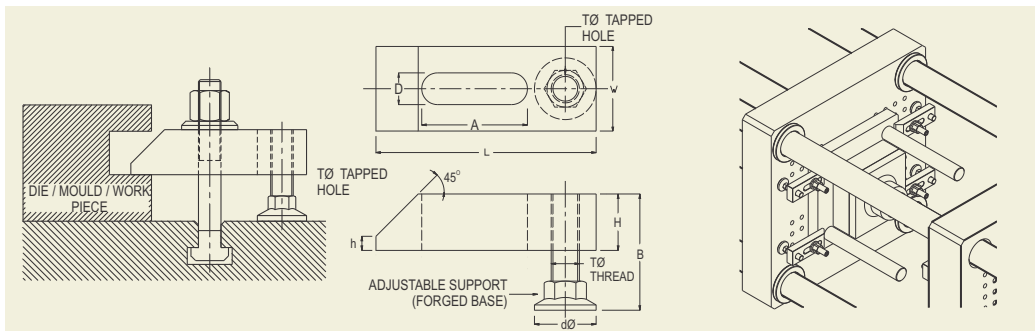
MODEL	dØ	x	PITCH	x	L	T-SLOT SIZE A	CLAMPING RANGE B	LENGTH OF CLAMP C	BREADTH OF CLAMP	TIGHTENING TORQUE Nm Max.*	CLAMPING FORCE Max.	N. W. Kgs.
MCF-16A	T-BOLT	M-16	x	2.0	x 130	16	0-50	124	58	210	3200 Kgs.	1.1
MCF-16B	T-BOLT	M-16	x	2.0	x 130	18	0-50	124	58	210	3200 Kgs.	1.1
MCF-20A	T-BOLT	M-20	x	2.5	x 150	20	0-65	156	68	410	5000 Kgs.	2.0
MCF-20B	T-BOLT	M-20	x	2.5	x 150	22	0-65	156	68	410	5000 Kgs.	2.1

TAPPED END CLAMP - WITH ADJUSTABLE SUPPORT

FOR PLASTIC INJECTION MOULDING & PRESSURE DIE CASTING MACHINES

'TOOLFAST' Tapped End Clamps are Straps having special threaded adjustable support at the rear which can be adjusted to required height. Most useful clamp for plastic injection moulding or pressure die casting machines where mould / die is clamped in vertical position and these clamps with screwed in adjustable support are convenient to the operator as other loose supports tend to fall down while setting. Hardened adjustable support with large diameter forged base gives rigid clamping support and ensures machine bed safety. Extra thick body of the clamp accommodates more number of threads for rigidity of screwed support.

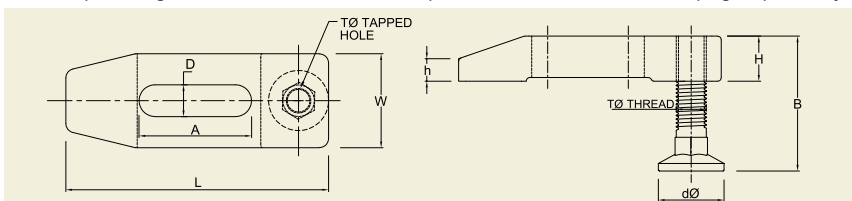
Supplied with adjustable threaded support only. T-Bolt or Stud with nut, washer etc. to be ordered separately.



MODEL	D SUITABLE FOR BOLT	L	A	W	H	h	TØ THREAD	dØ	B Max	N. W. Kgs.
TTUC-12	M-12	110	55	38	18	6	M-12	30	60	0.54
TTUC-16	M-16	125	60	48	24	8	M-16	35	70	0.98
TTUC-20	M-20	160	80	62	30	10	M-20	40	80	2.45
TTUC-24	M-24	200	110	72	38	10	M-24	50	85	3.67

STRAP CLAMP - FORGED BODY - TAPPED END - WITH ADJUSTABLE SUPPORT

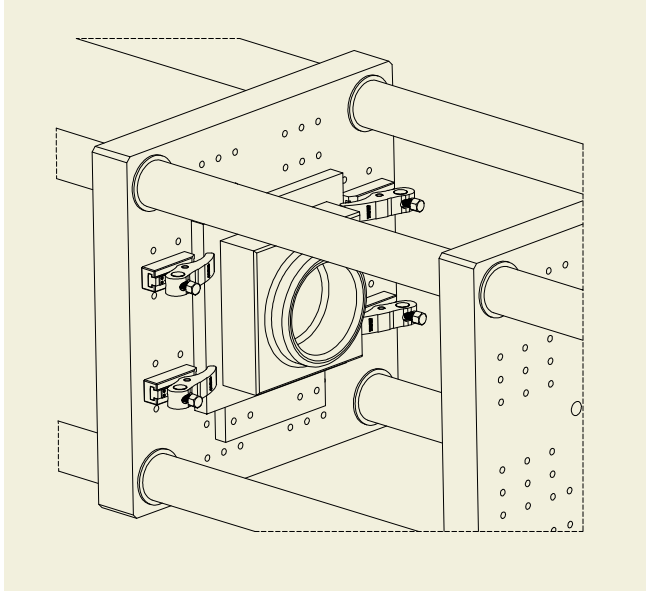
This clamp is a forged version of above TTUC clamps. Most suitable for mould clamping on plastic injection moulding machine & pressure die casting machines.



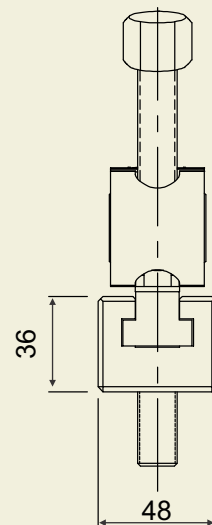
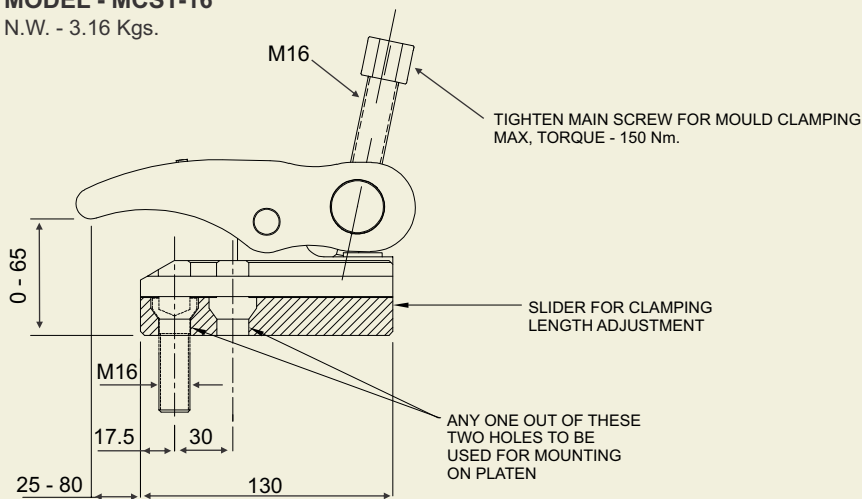
MODEL	D SUITABLE FOR BOLT	L	A	W	H	h	TØ THREAD	dØ	B	N. W. Kgs.
TSCF-16S	M-16	140	60	50	24	12	M-16	35	70	1.00 Kgs.
TSCF-20S	M-20	180	80	62	32	18	M-20	40	80	1.84 Kgs.
TSCF-24S	M-24	220	90	76	37	23	M-24	50	85	3.68 Kgs.

MCST SERIES MOULD CLAMP - SLIDER TYPE - MOST IDEAL FOR LIGHT AND MEDIUM DUTY MOULDS

'TOOLFAST' new MCST series clamp solves the problem where forward and backward sliding of clamps is required but there are no T - slots on the platen. Clamp is mounted with one front screw on the sliding rail to be screwed on any one suitable threaded hole on the platen. Rear main screw is tightened for clamping after sliding the clamping arm to appropriate position and then can be slid back after declamping.


MODEL - MCST-16

N.W. - 3.16 Kgs.



Max. clamping force 2200 Kgs. at max. 150 Nm Tightening torque.
Most ideal for light and medium duty moulds.

MCST SERIES MACHINE CLAMP - SLIDER TYPE

MCST series clamp with M16 T-nut provided can be used for clamping on T- slot table of Drilling. Milling or any other machine tool.

MODEL	SUITABLE FOR T-SLOT SIZE	N. W. Kgs.
MCST-16T-18	18	3.25
MCST-16T-20	20	3.30
MCST-16T-22	22	3.35
MCST-16T-24	24	3.42
MCST-16T-28	28	3.52

